



Philippine Province of the Society of Jesus
Simbahang Lingkod ng Bayan
Task Force: Bangon Pilipinas! for those affected by the Typhoon Yolanda
SLB UPDATE

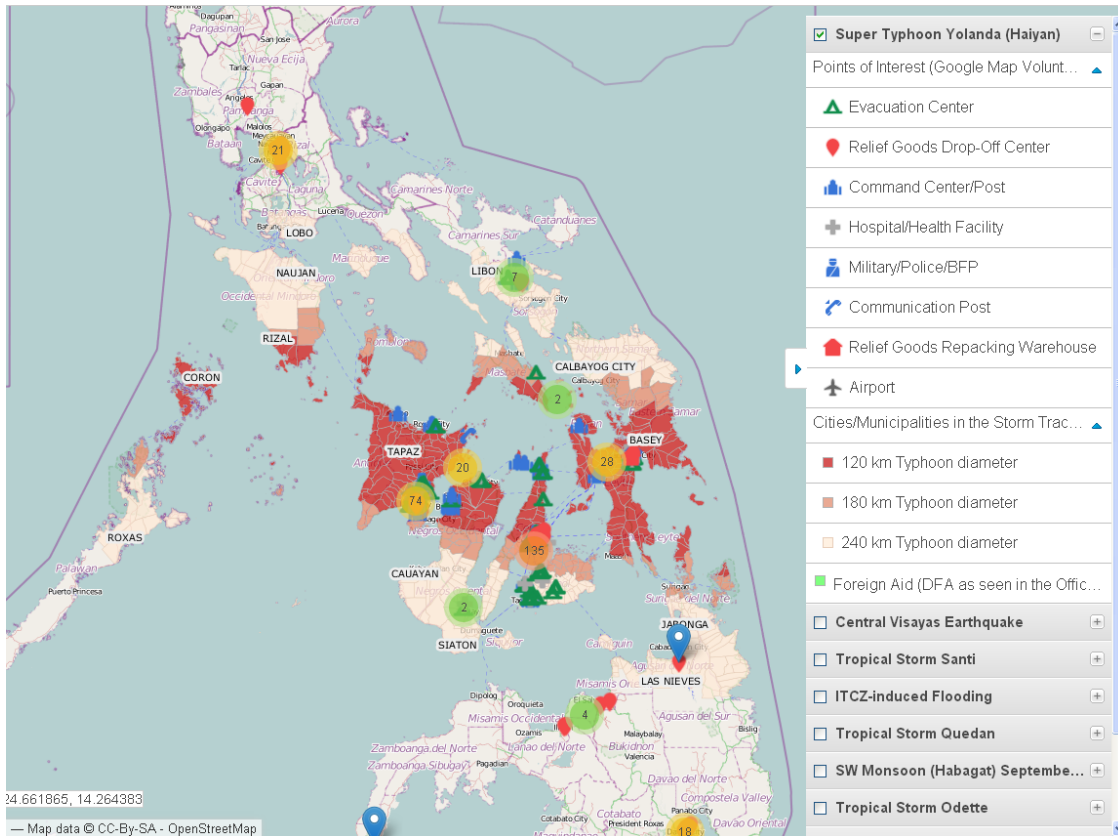
SitRep No. 2

Data taken from the National Disaster Risk Reduction and Management Council and from ground reports

Date: 16 November 2013, 8:35am

I. National Situationer

Casualties	3, 361 dead, 12,487 injured, 1,179 missing
Affected Population	1, 962,898 families, 9,073,804 persons
Damaged Houses	273,375 houses
Cost of Damages	Php9,452,016,222.13 worth of damages to infrastructure (Php362,834,761.13)and agriculture (Php9,089,181,461.00)
Cost of Assistance	Php75,687,142.73



Map of DSWD Disaster Mitigation Map taken from

<http://blog.mangomap.com/post/66060661703/dswd-disaster-mitigation-and-response-situation-map#>

The extent of damages is extensive. Government efforts have been concentrated in Tacloban, Leyte but areas have been generally unreachable. Private sectors have been mobilizing either to help government or to conduct their own relief operations especially those which have not been served for days.

I. Specific Areas Identified as Relief Receivers



Infographic on deployment targets

II. Specific Areas Identified as Relief Receivers

a. Culion, Palawan

Casualties	5 dead, 12 injured, 2 missing
Affected Population	3,694 families; 15,183 individuals
Damaged Houses	1,969 partial, 1,074 total
Farms destroyed	916
Livestock lost	37
Boats, bangkas lost	137
Evacuation Status	794 in centers, 965 evacuated but not in centers
Power	No power restored in whole of BISELCO (Busuanga, Coron, Culion)
Cost of Damages	Php2,545,000.00 for all of Palawan
Cost of Assistance	Php375,000 from the LGU

Relief Updates for Culion

- 2000 packages bound for Culion has been loaded by Nov 16, 5am
- 1,400 packages by Sunday, Nov. 17
- 2,000 packages by Wednesday, Nov. 20
- We are using a private yacht for the deployment on Nov 16 and 20; We thank Mr. Sandy Sandoval for the yacht and Mr. Arman Martinez for the gas.
- The Philippine Navy, c/o Comm. Oropeza, will help us load on Nov. 20. Aside from goods, we are also going to deliver 2 solar panels and batteries care of Solar Solutions, Inc.
- We will be coordinating with the parish headed by Fr. Jody Magtoto, SJ for the orderly delivery of goods
- We are partnering with Kawil Tours and Solar Solutions in this mission. The teams that will go there consist of Guido Sarreal, Jun Tibi, Buggy Talledo and RJ Dimalanta.
- This will cover more than the 3,694 families reported as affected. The relief packs will last them for 3-5 days. After assessing the situation on ground, the team will still discern if another batch of delivery is needed.

b. Isabel, Leyte

Casualties	1,068 dead, 56 injured, 10 missing *
Affected population	9,274 families, 43,953 persons
Damaged Houses	No data
Cost of Damages	Php2,684,547,000.00 for the whole region
Cost of Assistance	Php7,717,734.90

Relief Updates

- 2000 packages delivered last Nov. 14
- a busload of water has also been delivered as of last Nov. 15
- documentation if the relief has reached the target beneficiaries is still pending
- Tanging Yaman Foundation and G-Liner Bus Line is helping us with the land transport of goods.



Goods being loaded to bus bound for Isabel and Ormoc, Leyte



c. Ormoc, Leyte

Casualties	21 dead, 106 injured in Ormoc. Data shows a total of 10 missing persons from Leyte but not from Tacloban
Affected population	40,681 families, 191,200 persons
Damaged Houses	No data
Cost of Damages	Php2,684,547,000.00 for the whole region
Cost of Assistance	Php7,717,734.90

The Ormoc relief mission is organized still by the Tanging Yaman Foundation and G-Liner Bus Line. It travels the same route as the goods going to Isabel, Leyte, only an hour apart. Many goods have concentrated on Tacloban City but there is also extensive damage in Ormoc. There are no Jesuit communities in the Leyte-Samar region so we are trying to work with private institutions and the Church network. As of Nov. 16, we have deployed 1000 packs for Ormoc, Leyte already.

III. Relief Operations Summary as of Nov. 14

Total Cash Received:	Php5,503,307.49
Total Cash Disbursed:	Php3,248,388.35
Total Cash on Hand:	Php2,254,919.14
Total Goods Received	3,900 packs as of Nov. 14
Total Goods Deployed	2,000 packs bound for Isabel, Leyte as of Nov. 14; 2000 packs bound for Culion, Palawan as of Nov. 16, 5am.
Total Goods on Hand	2700 packs
Targets	1,500-2000 packs for Culion by Nov 16-19; 1,000packs for Ormoc,Leyte by Nov 18; 1,000 packs for Isabel, Leyte by Nov. 16
Number of Volunteers served	600+

IV. Documentation

CALL FOR DONATIONS

for Typhoon Yolanda Relief Operation

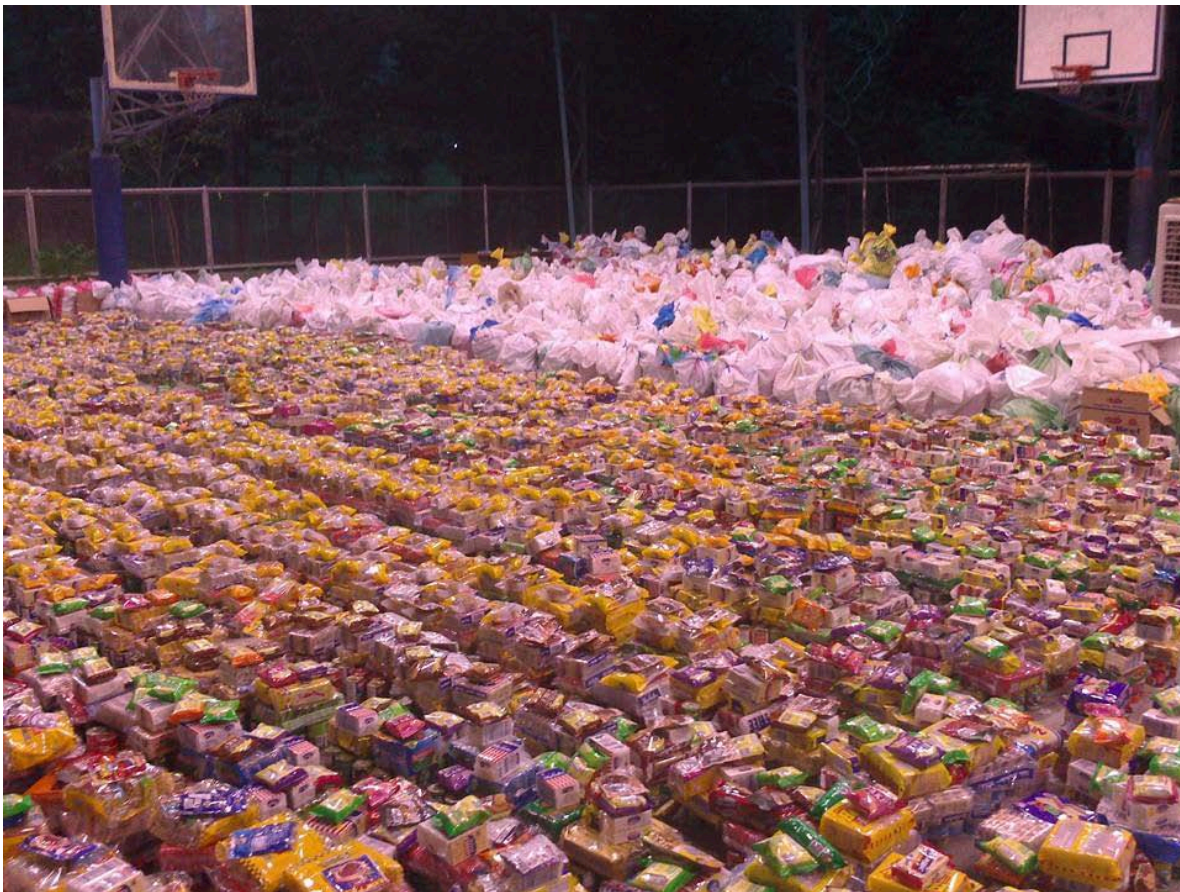


PAILS
12 liter capacity

SACKS
50 kilo capacity

You may drop off your donations at
RICHIE FERNANDO
COVERED COURT
near Loyola House of Studies
Ateneo de Manila Univ. QC

Simbahang Lingkod ng Bayan
Loyola House of Studies,
Ateneo de Manila University, QC
Tel #: 426-5968 or 426-6101 Loc. 3440
Email: slb@admu.edu.ph



Goods still to be repacked.



(photo via the ADMU alumni)

Human Chain formed by Ateneo High School students, transporting goods from the high school campus to the Richie Fernando, Covered Courts. The High School has been very supportive of the relief operations. Headed by the team of Fr. JBoy Gonzales, SJ, they are cooking meals for volunteers on a daily basis.

Note: Huge volumes of volunteers are pouring in the Ateneo. There is also a satellite DSWD (Department of Social Welfare and Development) relief ops in the college covered courts parallel to ours. For this weekend, we are expecting more than 1000 plus volunteers.



The Ateneo College Glee Club energized the volunteers with their songs.